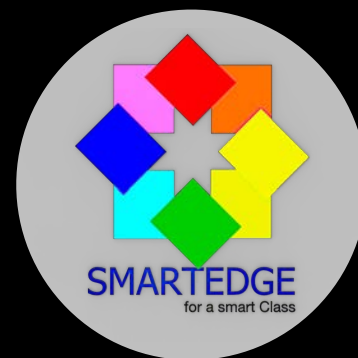


SMARTSCHOOL



EDUCATION

JOINERY

Custom fitted to the clients requirements

MOVABLES

learner requirements
Executive furniture
Storage
Library
Hall
Home economics
Laboratory
Computer room
Pigeon holes



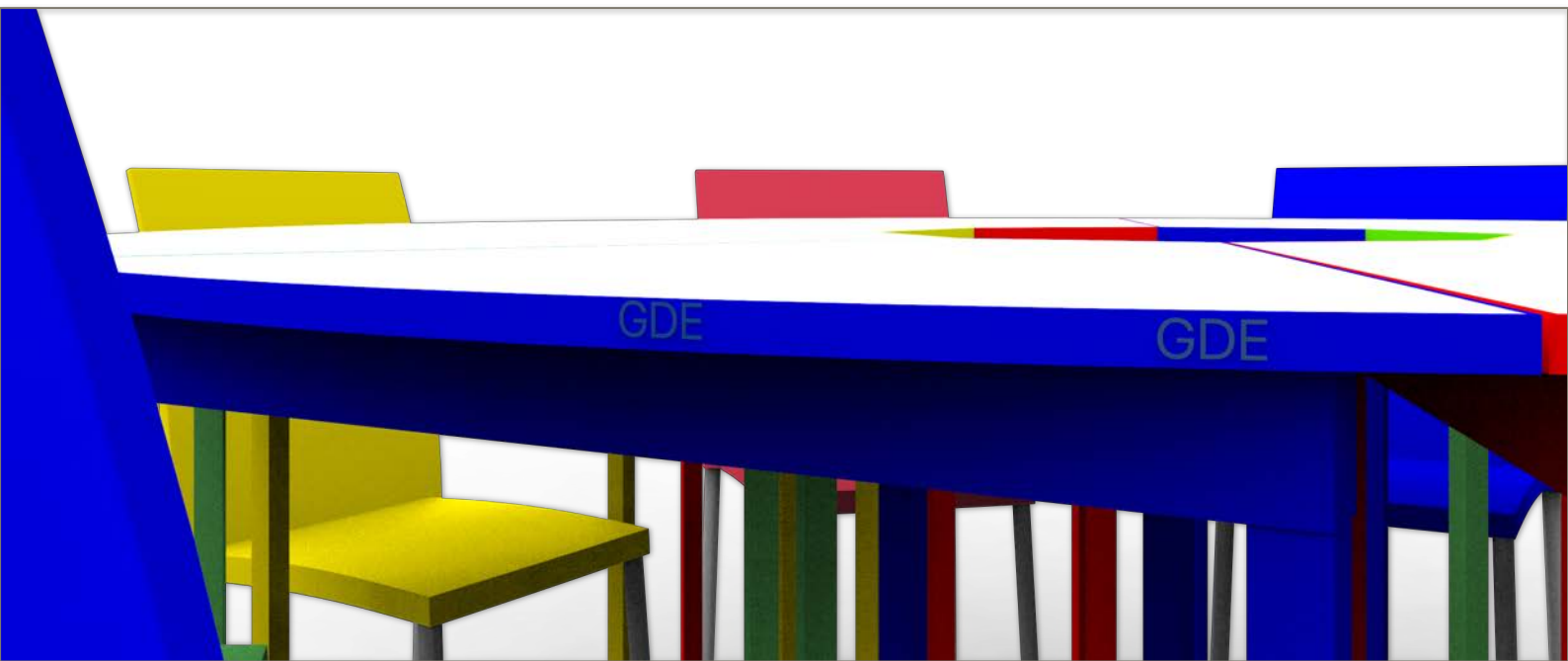
education

Department of Education
REPUBLIC OF SOUTH AFRICA

FURNITURE
PIN BOARDS
PEG BOARDS
PIGEON HOLES
HATCHES
LIBRARY
SINK UNITS
KITCHENETS
HOBS & OVENS
SHELVING
LEARNER DESK
CHAIRS
STOOLS
TABLES

EVEREDGE
SMARTEDGE - SMARTDESIGN - SMARTFURNITURE

COMPONENT BREAKDOWN



Design

The INFRAQUAD desk solution is designed in such a way that you are able to plan a flexible seating solution in almost any working environment. The adjustable legs allow the INFRAQUAD desk to be used in a Classroom of 1st Graders and easily adapted to suit a last year student. The circular section unit positioned in the center can be used to insure that your 8 seating arrangement fits perfectly and neatly every time. It can be “USB” adaptive, to be used as a charging station. The long center base ensures a neat cabling solution.

Materials

This is a proudly South African product, which starts with self-staining forests under the guidance of local forestry. We were able to produce a high quality board with a 0.8mm G-Lam® HPL, laminated on the surface, creating a durable product and features including:

Scratch Resistant

Heat Resistant

Chemical resistant

G-Lam® HPL offers increased wear resistance and hygienic surface properties. Wide selections of high-quality colour options are available, which in conjunction with our state-of-art production techniques allow us to offer the highest global laminate technology and quality.

G-Lam® HPL is produced by impregnating paper, then pressing it under pressure of 100 – 120 kg/m2 and temperatures of 160-0C for 60-70 minutes

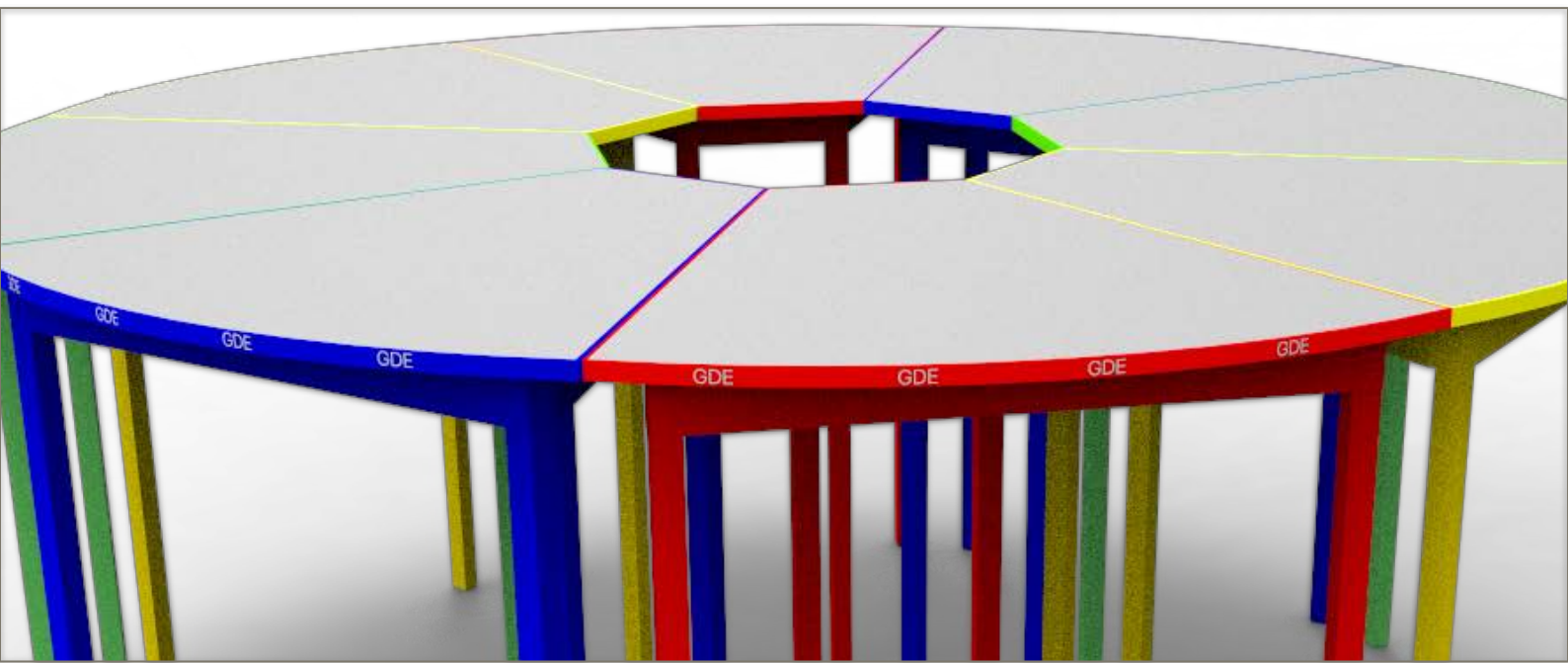
Hygiene and Application

G-Lam® HPL is used in many different environments, this surface is nonporous and does not allow bacterial growth due to its surface being manufactured under both high pressure & high temperatures.

G-Lam® HPL is ideal for use in a retail environment, interior decoration, home and office furniture, kitchen and bathroom worktops, hotels, schools, public buildings in fact almost any application where increased surface wear is required.

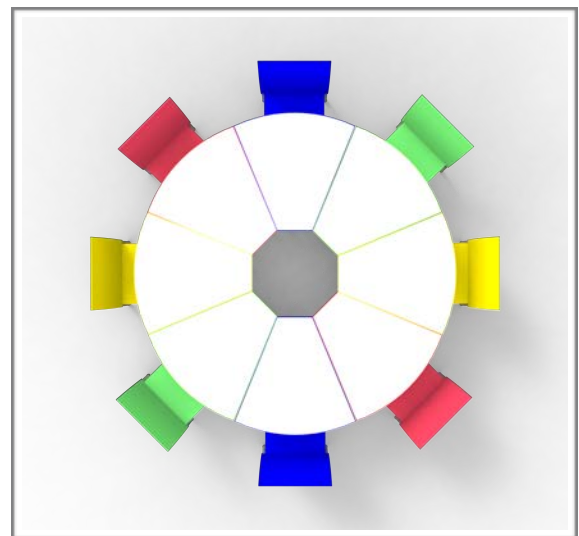
The laminate surface is nonporous and does not allow bacterial growth due to its surface being formed under both high pressure and high temperature

LEARNERS DESK

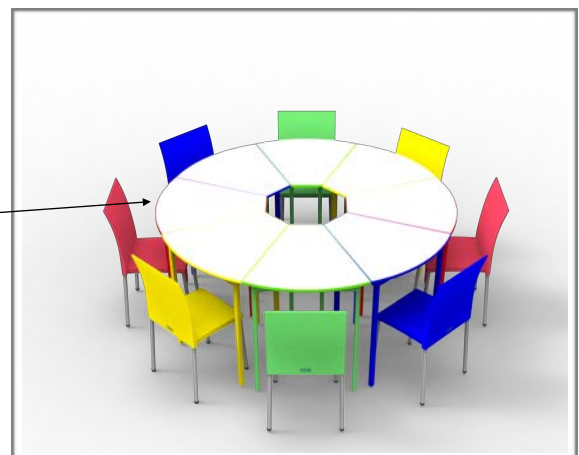


Specification offered

- 8 section quadrant desk
- Surface
- Smart Edge A-Grade PVC rubber compound
- A-Grade 16mm Particle Board
- Balancing melamine backer
- 25mm Square tubing Legs (Silver)
- Powder Coated Legs 60-70 Micron
- Quadrant Interactive Design



BRANDED
Personalised logo



BOARDS



MAGNETIC DRY WIPE BOARD (VARIOUS SIZES)



Specification offered

- Magnetic White Board Surface
- Deluxe Anodised Aluminium Frame.
- Rounded Plastic Corners.
- Clip on Anodised Pen Rail

PIN BOARDS (VARIOUS SIZES)



Installation

- Can be Mounted Horizontally or Vertically.
- Includes Mounting Brackets and Screws.
- Includes Mounting Instructions.

Specification offered

- Felt available in assorted Colours (See Colour Swatch).
- Deluxe Anodised Aluminium Frame.
- Rounded Plastic Corners

LEARNER CHAIRS



Specification offered

- Injection moulded plastic (PP)
- Aluminium silver anodised legs
- Indoor as well as outdoor use.
- Resistant to colour fading
- Light weight & stackable
- Zero maintenance.

Installation

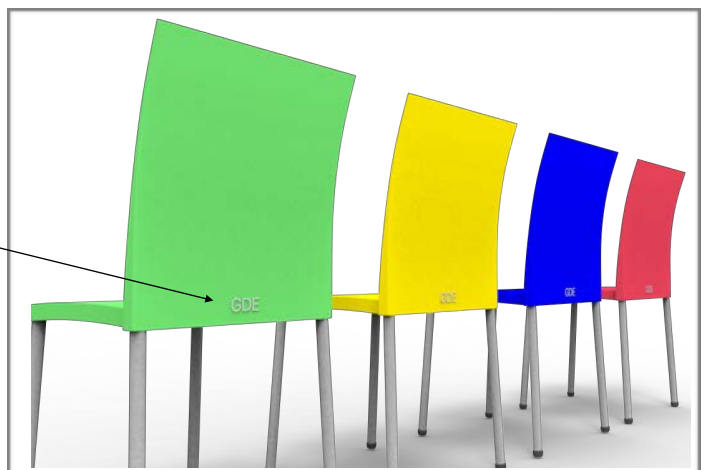
- Can be stacked Vertically.

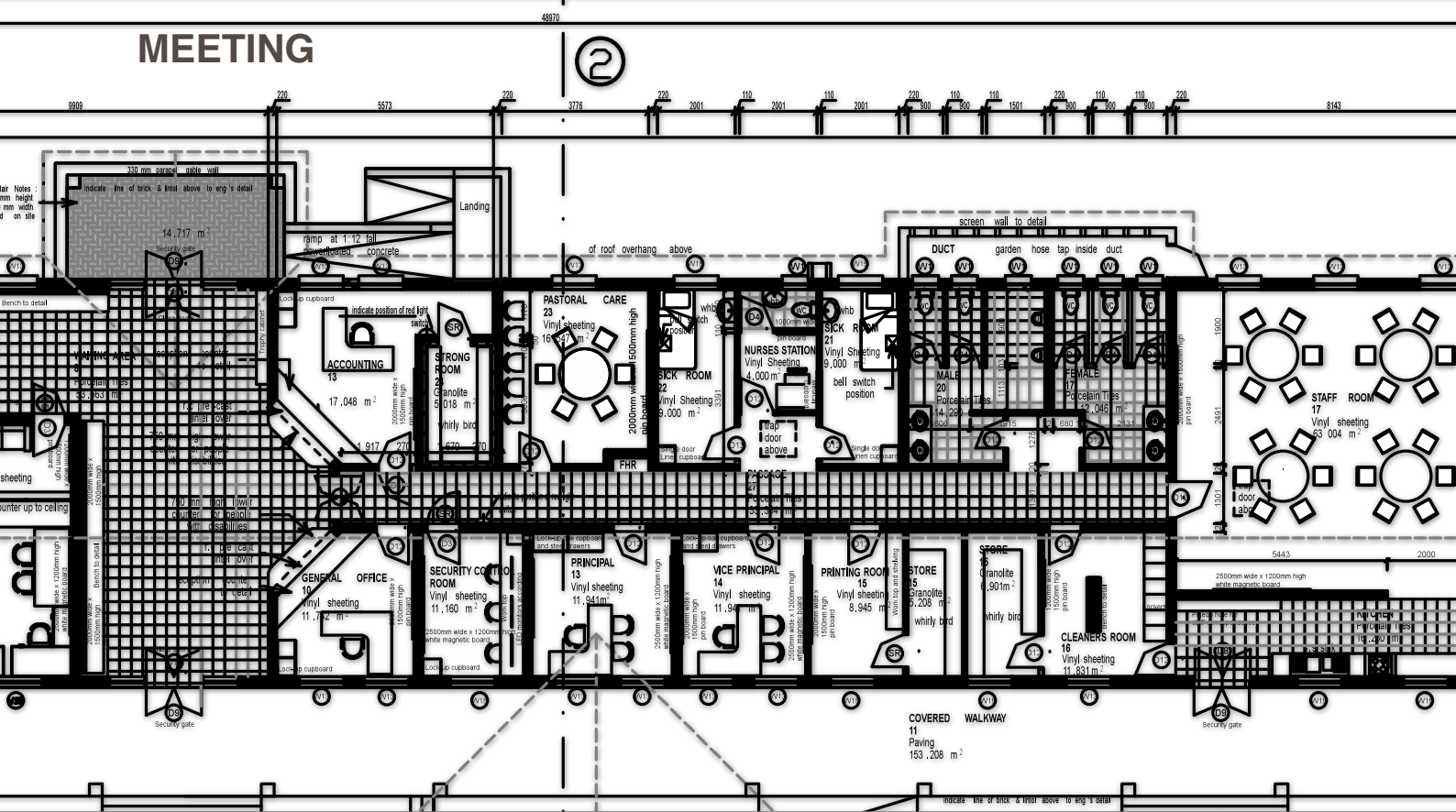


Legs are Frequency Welded to hinder theft



**BRANDED
Personalised logo**





6 SEATER TABLE

Specification offered

- Woodgrain and Plain Colours.
- 16mm Top.
- Pole Leg System.
- Smart Edge Solution



TEACHERS TABLE

Specification offered

- 2 Draw 1500X850X750H
- Wood - 16mm
- Frame - 32mm Square tubing
- Powder Coating - 60-70 micron
- Colour Dark Satin Black

Installation

- installation as per Specific to layout



BRANDED
Personalised logo



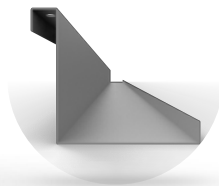
PURPOSE DESKING



Cable - Gromit



Branded - logo



Power - channel



Beam - Desk



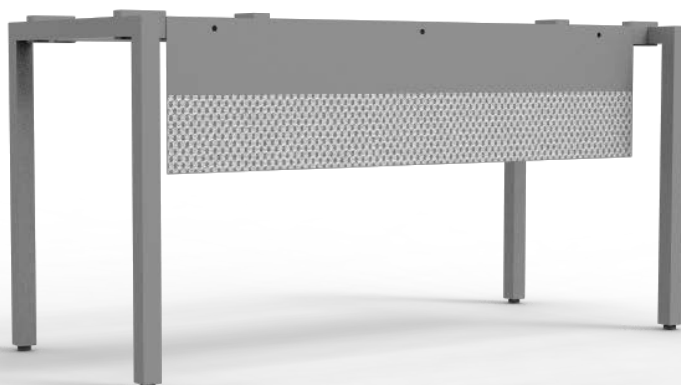
Computer - Desk



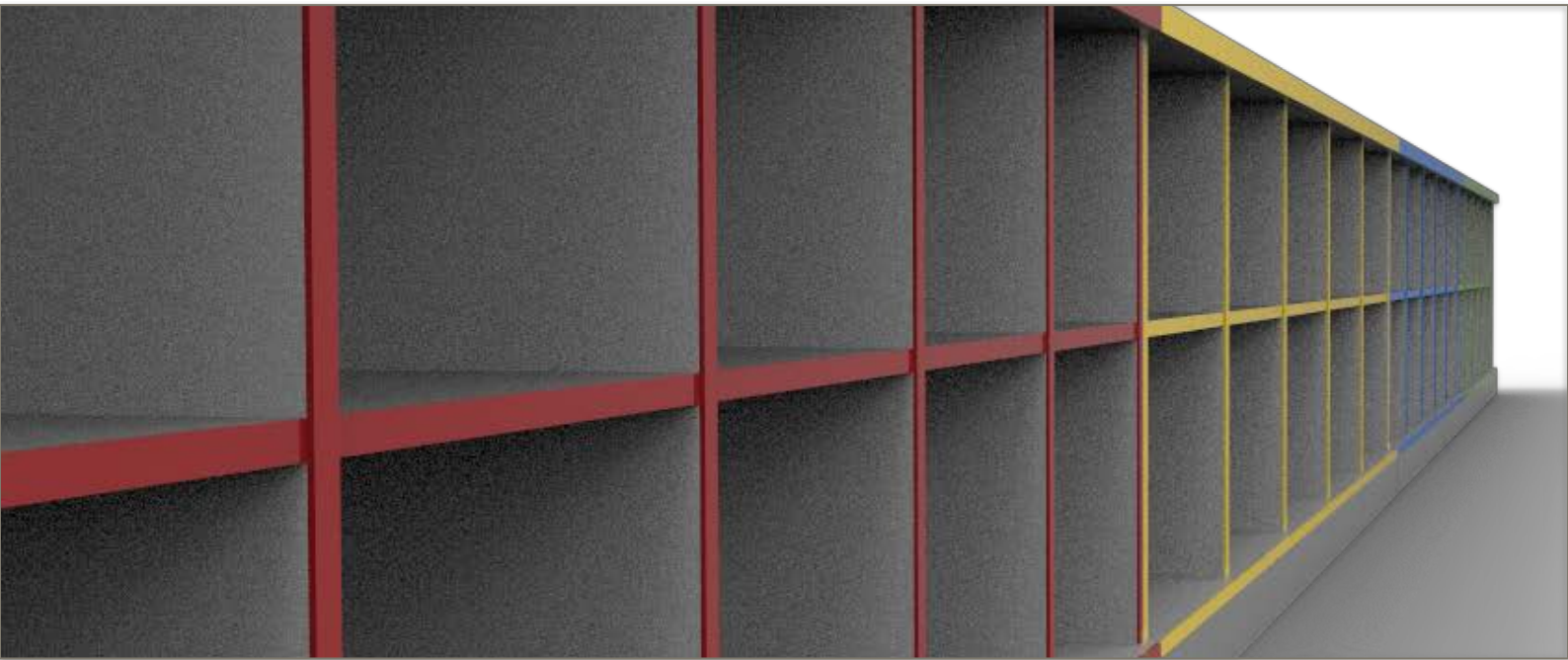
Meeting - Desk

Specification offered

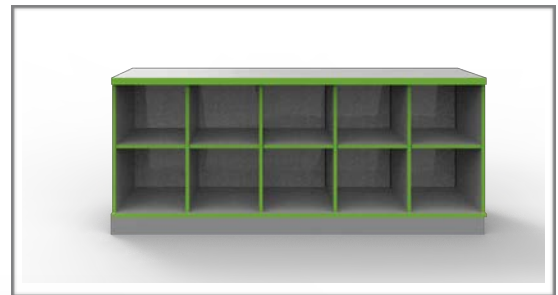
- 1800mm x 800mm OAK desk
- Pedenza
- Corner link



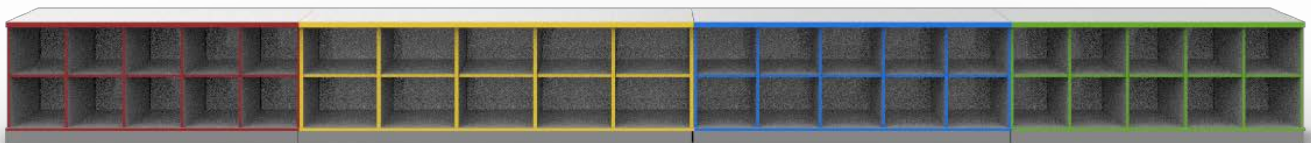
LOCKERS AND PIGEON HOLES



PIGEON HOLES



Pigeon Hole - 10 hole section



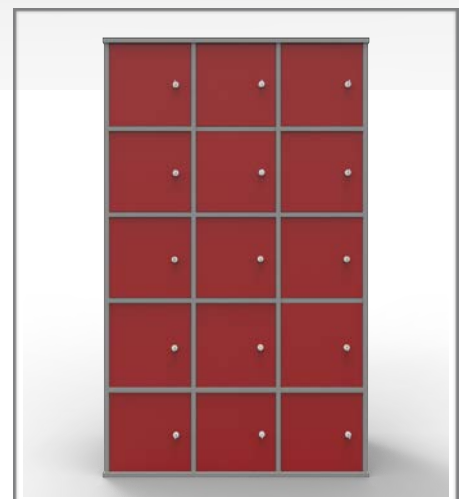
Pigeon Hole - complete 40 hole

LOCKERS

- Various faced compartment lockers
- Hinges open up to 164° for ease of access
- High quality locking mechanism
- Smart edge 2mm edging
- Features - Anti Bacterial



Locker - Lockable



STORAGE UNITS



Library - book shelf



Magazine - rack

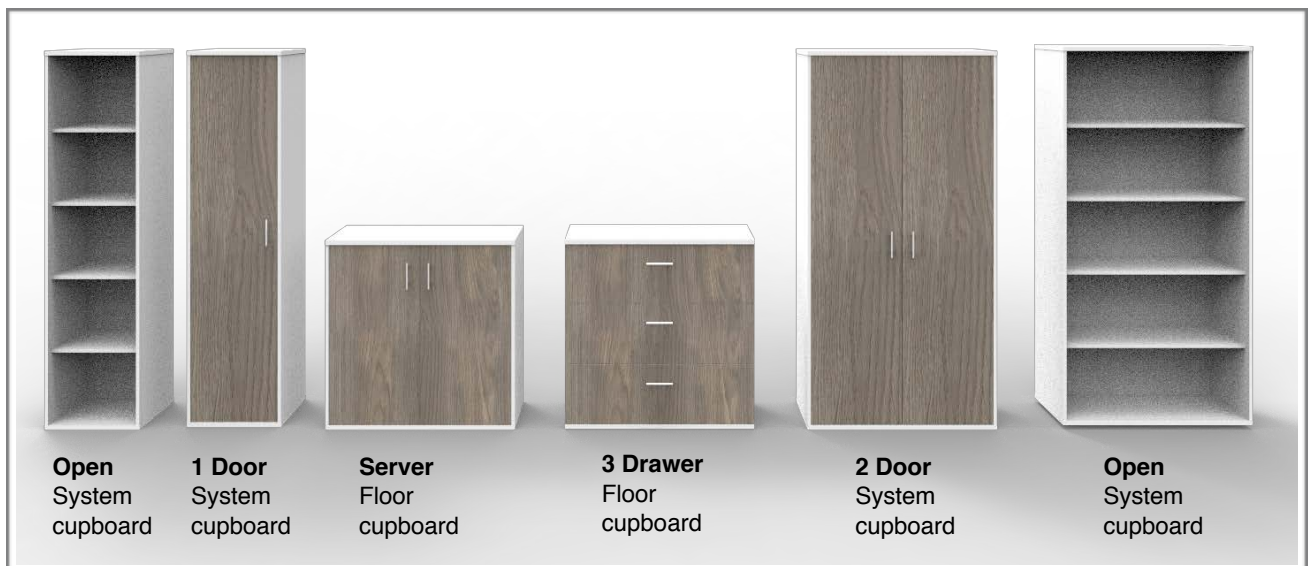
The need for mobile classroom storage cabinets in today's educational environment is clear. From teacher wardrobe cabinets to unique specialty school cabinets with storage bins, you'll find the perfect classroom storage unit for your



Branded - logo



Drawer - 4 filing system



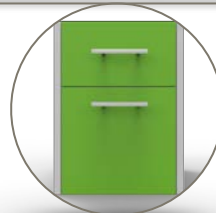
DESKING COMPONENTS



4 Drawer filing



2 Drawer Pedestal



**Systems Cabinet
"Roller Door"**



Mobile Pedestal



Pedenza



Bookshelf "1T"



Bookshelf "2T"



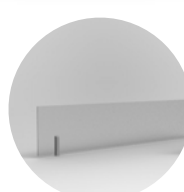
Predenza sliding Door



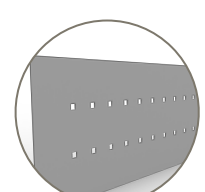
Credenza - 3 drawer



Storage - wall unit



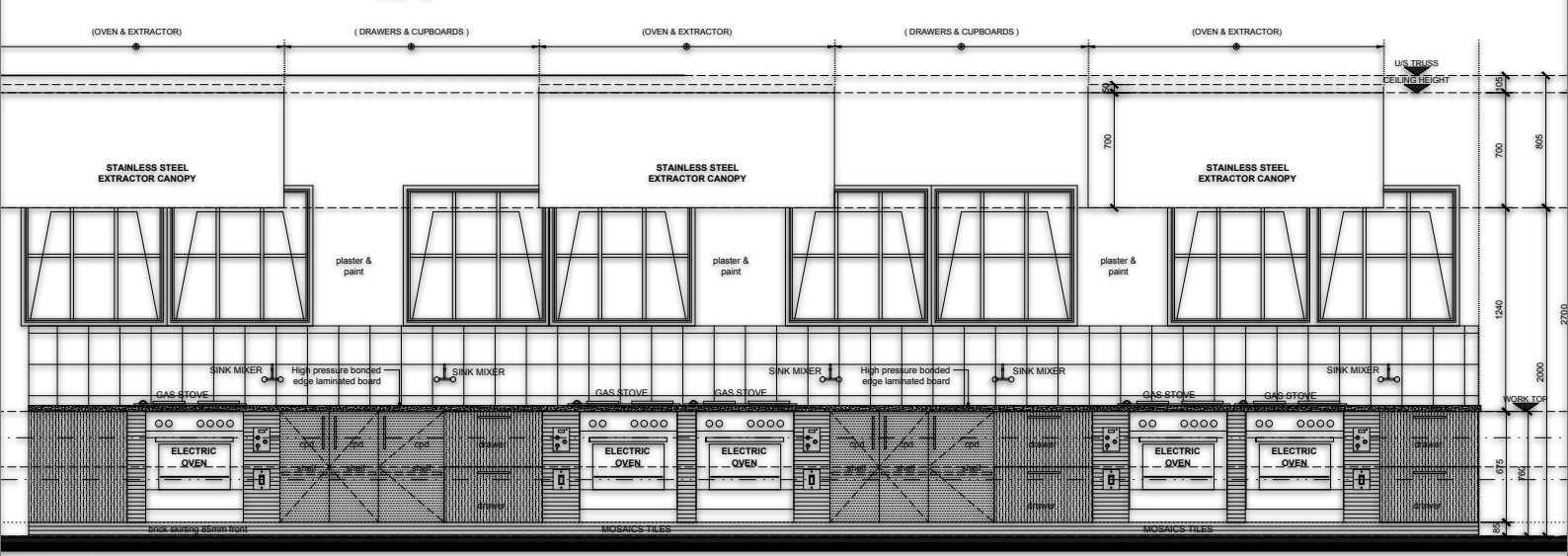
Screen - Perspex



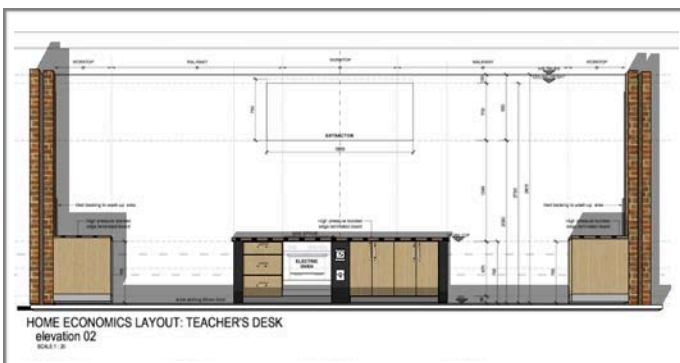
Modesty - Metal

HOME ECONOMICS

HOME ECONOMICS LAYOUT: TEACHER'S DESK elevation 02 SCALE 1:20



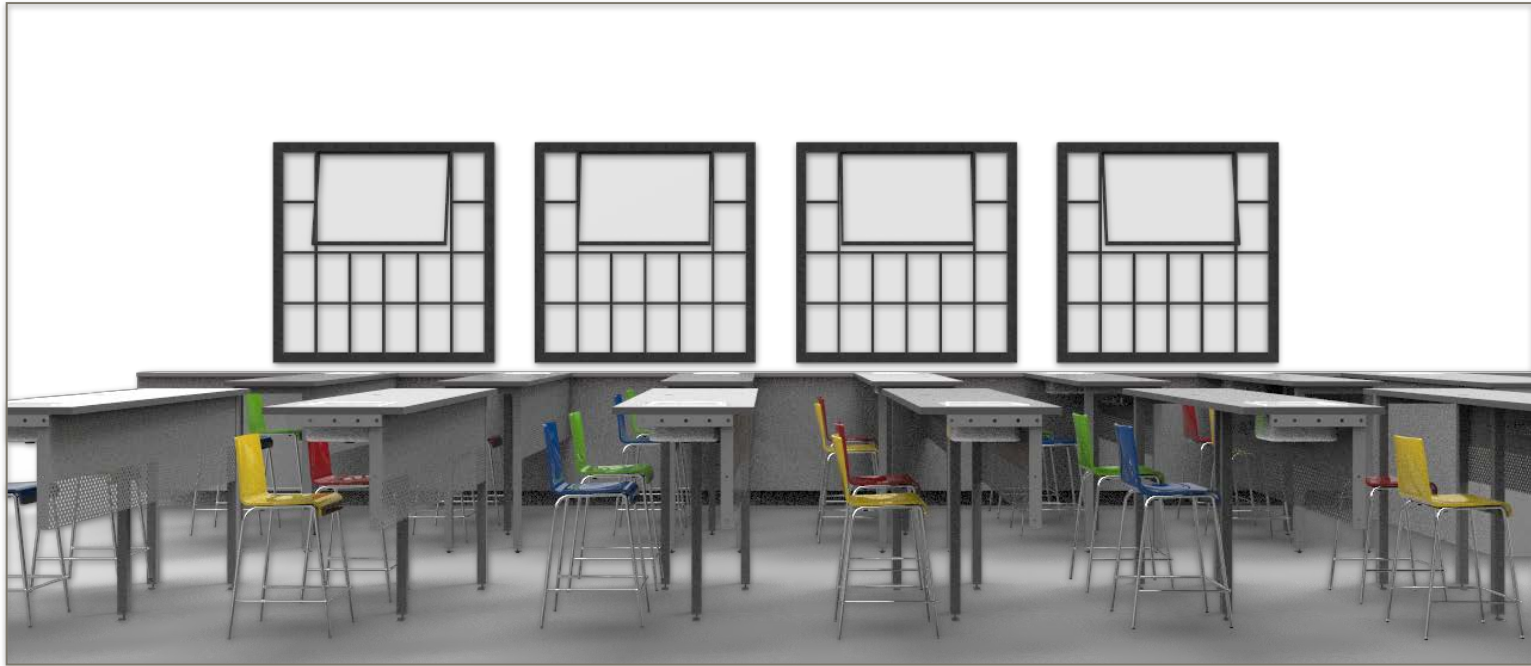
Classroom - elevations



Teachers - workspace

- Get creative and have fun
- Provide a safe and inclusive class rooms
- Teach valuable life skills
- All students have access to the latest equipment

LABORATORY



Every child, regardless of his or her unique challenges or learning difficulties, is capable of accomplishing extraordinary things. A laboratory environment is a combination of multi-sensory and experiential programs to accommodate different learning styles and strengths.

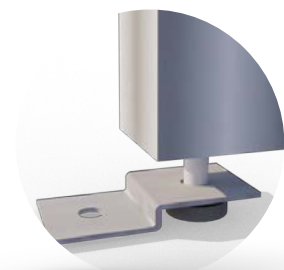
The area should encourage creativity, innovation, and intellectual risk-taking and make learning fun and interesting. When kids and young adults are able to fully explore their interests and curiosities they're better positioned to reach their full potential and meet the many challenges of the 21st century.



Laboratory - top view



Lab desk - complete



Leg - Tie down